



Integrated Team Care (ITC)

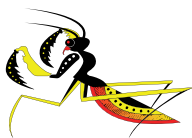
Integrated Team Care (ITC) contributes to improving health outcomes for Aboriginal and Torres Strait Islander people with Chronic Health conditions.

Chronic disease is an illness that has been or likely to be present for at least 6 months and longer.

This includes, but is not limited to, clients with:

- Diabetes
- Eye Health conditions associated with diabetes
- Mental Health
- Cancer
- Cardiovascular disease
- Chronic Respiratory disease
- Chronic Kidney disease

(Dental and Optometry is not an eligible condition for the purposes of the ITC Program)



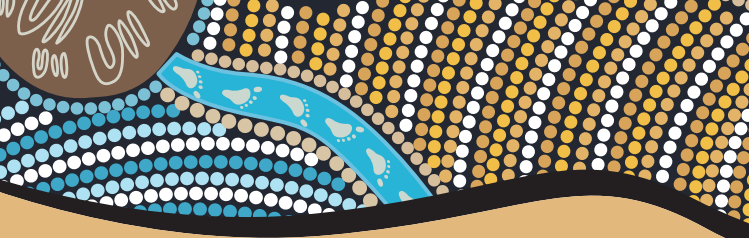
Durri

Aboriginal Corporation Medical Service
RGN 27

More information:

Lisa 6560 2300

ITCsupport@durri.org.au



To be eligible for ITC assistance Aboriginal and Torres Strait Islander patients must:

- Be enrolled for chronic disease management in Durri ACMS
- Have a current GP Management Plan and Health Assessment
- Be referred by a Durri GP to the ITC program.
- The care plan must list all providers (specialists)

ITC clients who are referred to a Specialist or medical appointment where there is a cost for that service may be eligible to receive financial assistance to access that service.

You must notify the ITC Coordinator of upcoming specialist appointments as soon as possible. Please do not leave it until the last minute. Minimum three (3) days' notice is required.

Your ITC registration is valid for 12 months. To renew you will have to have a yearly Health Assessment and GP Management plan.



Durri

Aboriginal Corporation Medical Service
RCH 27

More information:
Lisa 6560 2300
ITCsupport@durri.org.au